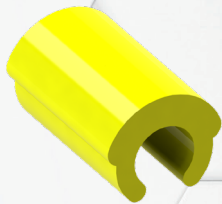
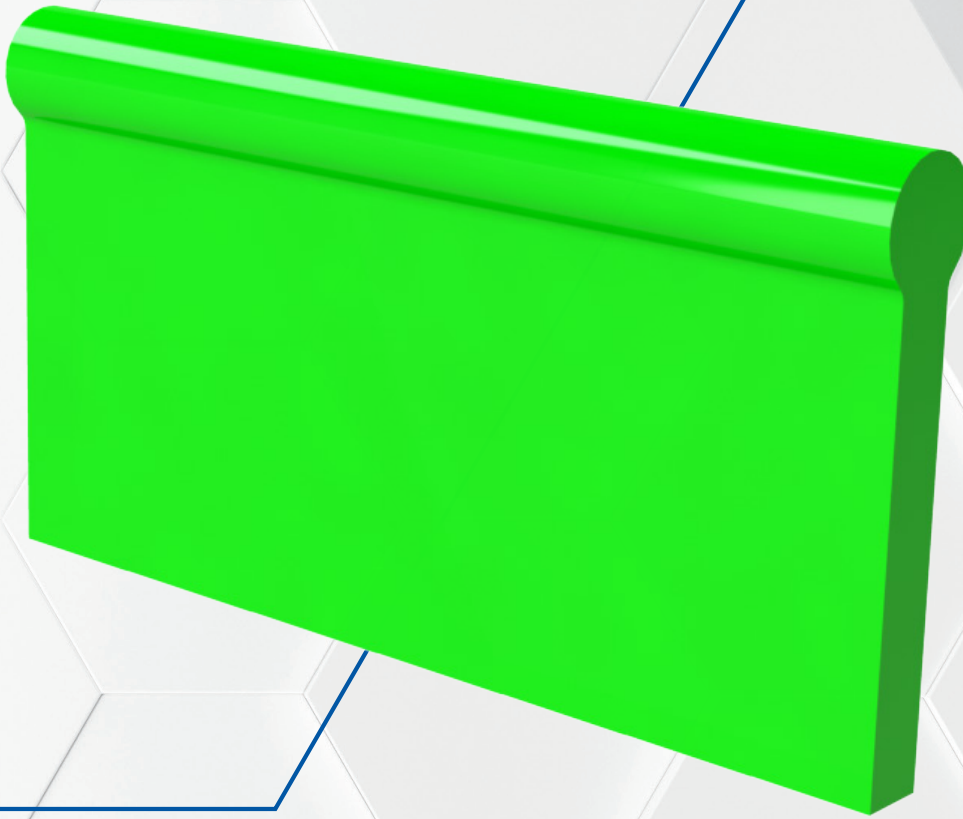




HADER
SOLUTIONS



Hader VX

On Bar

USER GUIDE



www.hader.eu

Hader VX. The most popular bar system in the world.

FOR BARS AND EXTRACORONAL CONSTRUCTIONS

The Hader VX is a top choice for bar-supported overdentures and is the most popular dental attachment of its kind. With more than 40 years of use around the world, it's clear that dentists and dental technicians trust and appreciate this attachment. Its versatility shines through, as it can also be used as an extracoronary attachment, offering both reliable security and attractive results.



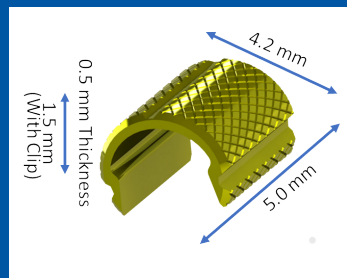
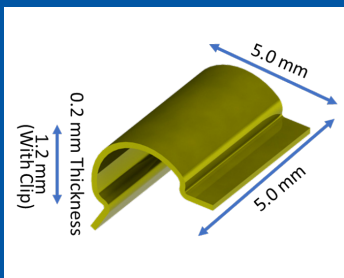
THREE RETENTION LEVELS

Streamline maintenance with our user-friendly plastic inserts, designed for effortless replacement using our specialized yellow insertion tool for dentures over bars and the red insertion tool for extracoronary attachments. Choose from three retention levels—yellow for standard, white for reduced, and red for increased retention—allowing Hader VX to be tailored precisely to meet the unique demands of any case.



TWO HOUSINGS

We offer two different housings designed to provide secure support and simplify the replacement of the male component. The original housing is ultra-thin, measuring just 0.2mm thick, making it an excellent choice for cases where space is limited. For even more precision, the alignment housing, which is slightly smaller at 4.2mm wide, features a parallel groove on the top. This groove is specifically designed to ensure accurate parallel alignment before processing, helping to achieve a precise fit and optimal results every time.

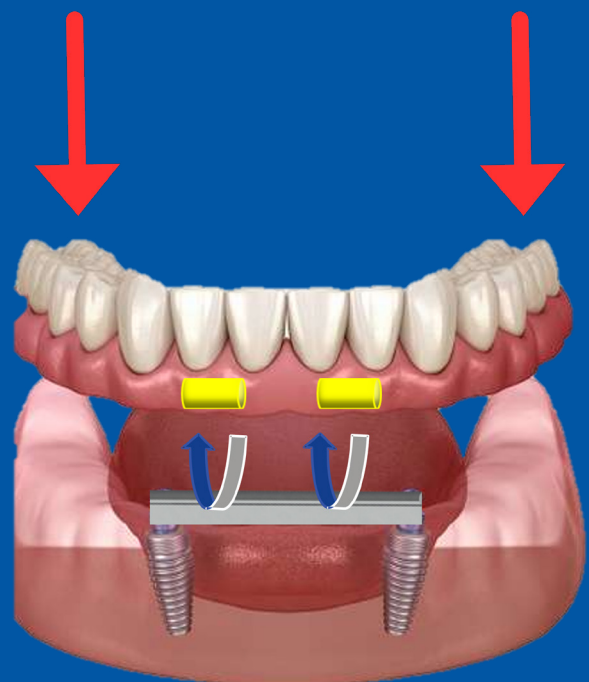
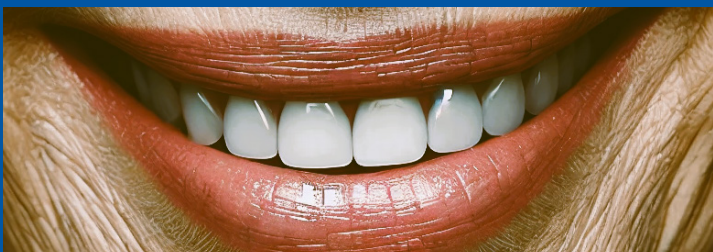


20° ROTATION

The Hader VX allows for natural rotational movement of up to 20° at the bar level, which is crucial for compensating for the compression of soft tissue during chewing. This design feature helps to distribute forces evenly, reducing harmful stress on the supporting pillars. By accommodating the natural movement and compression of the gums, the Hader VX not only enhances patient comfort but also extends the longevity of the dental restoration by minimizing the risk of damage caused by excessive loading.

AESTHETIC SOLUTION

The Hader VX offers the potential for beautiful aesthetic results when used as an extracoronary attachment, thanks to its compact size. This allows the male component to be placed very close to the abutment teeth, with the first denture teeth easily covering the attachments. This precise placement enhances the overall appearance, providing a seamless and natural look for the patient.



Hader VX on a Bar

Also available for



Hader VX is the world's most popular bar attachment, with decades of successful clinical use globally. Its widespread adoption reflects its reliability, versatility, and proven performance in various patient cases. Trusted by dental professionals everywhere, Hader VX has become the preferred solution for those seeking secure, long-lasting results.

1. Manufacture Bar

1. Determine the path of insertion of the prosthesis and wax-up the abutments, crowns, or post-copings.

2. Choose the plastic bar: standard (ref-5021002) or short (ref-5021003), adapt the height and length for a good fit between the abutments. Grind the gingival part to relieve the papilla. Use the paralleling mandrel (ref-5021007) to produce structures with multiple sections of bars. **Note:** The bar requires a minimum of 2.5mm height.

3. Attach the bar to the abutments. If necessary, add wax between the model and the bar. This will provide a pontic-like gingival contact.



4. Sprue out of the functional area of the bar. Invest and cast in the chosen alloy. Finish and polish without removing excessively material from the bar, as this would reduce retention. Send for try-in.



5. Place the casted bar on the model and place the Hader green processing spacers over the bar. Trim them to fit the height of the bar.

IMPORTANT: Always use processing spacers. They will create a "tunnel" in the acrylic to permit flexing of the plastic inserts flanges during insertion and removal of the prosthesis.

6. Block out the undercuts and upper free areas of the bar and abutments, leaving the processing spacer free of any material.

7. Seat the traditional (ref-5021004) or alignment metal housing (ref-5021005) on the processing spacer. If using the alignment housing, check that the grooves of both housing are aligned.

8. Process the acrylic, finish and polish. Remove the processing spacers by cutting them in half with a scalpel.

9. Insert the plastic inserts with the yellow insertion tool (ref-5021014). It is recommended to start with standard retention and adapt if necessary.



Use of Analogue

Follow these instructions to transfer an existing bar to a master model for manufacturing a new denture

1. In the mouth, block out the space under the bar and take a full impression. Ensure to accurately copy the existing bar.



2. Measure the analog and reduce its length to match the bar in the mouth.

There are two analogs to choose from. The Hader aluminium analog (ref- 5021018) a durable and reusable alternative, and the white delrin analog (ref- 5021019) a single-use option which is easier to cut and trim.



3. Make small retention grooves or holes in the analog to ensure retention in the stone model and seat it in the impression

4. Pour the master model.

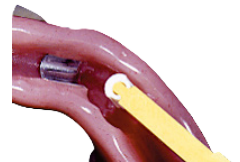


Replacing Females

The female components can be easily replaced chairside or in the laboratory

1. Remove the plastic inserts to replace by cutting them in half with a scalpel. Ensure not to damage the housing.

2. Insert the new plastic inserts with the yellow insertion tool (ref- 5021014). The plastic inserts will audibly click when they are inserted into the housing.



There are three available retention levels to choose:
Yellow (ref -5021010), standard retention.
White (ref -5021011), reduced retention.
Red (ref -5021012), increased retention.



Relining

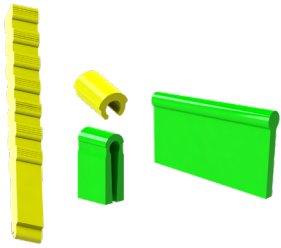
1. Take a regular reline impression keeping the plastic inserts in the prosthesis
2. Remove the plastic inserts
3. In bar supported cases, use plaster and a separating liquid to fill the space within the bar and the inserts section.
4. Fabricate the stone model and remove all impression material. It is recommended to use a reline jig or flask.
5. Reline as usual. Finish and insert new plastic females with the desired retention.

ALSO AVAILABLE FOR

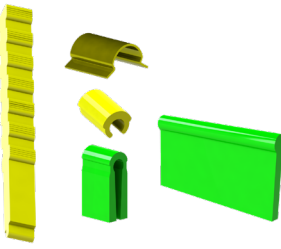


It's time to unlock the full potential of digital dentistry with the Hader Digital Library. Visit our website www.hader.eu, or **scan the QR code** to download the Digital Library today, and take your dental practice to new heights.

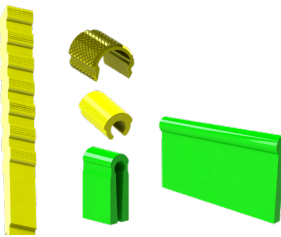
Available Kits



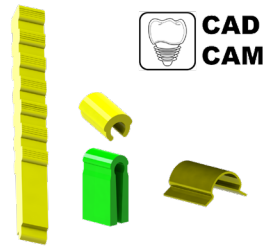
5022001
Hader VX S Kit
 With two plastic bars
 and six plastic inserts
 and processing spacers.



5022002
Hader VX C Kit
 Complete kit with
 two pieces of each
 component and one
 insertion tool.

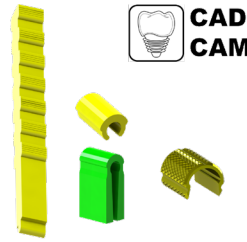


5022010
**Hader VX C
 Alignment Kit**
 With alignment metal
 housings.



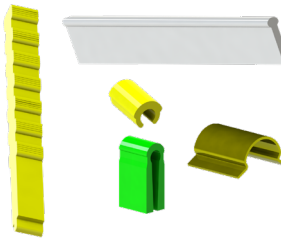
 **CAD
 CAM**

502006
**Hader VX C CAD-
 CAM**

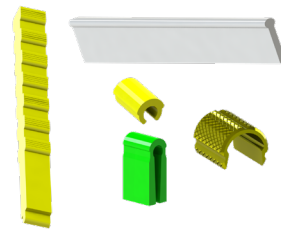


 **CAD
 CAM**

5022012
**Hader VX C
 Alignment Kit
 CAD-CAM**



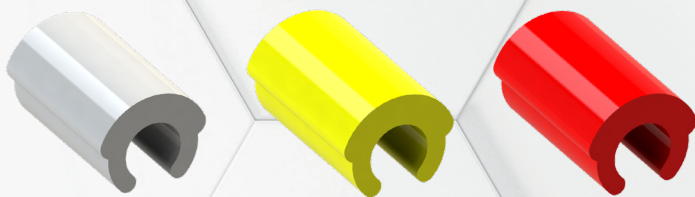
5022004
**Hader VX Service
 Kit**
 Complete kit for
 servicing, including
 analogue bar.



5022011
**Hader VX Service
 Alignment Kit**
 With alignment metal
 housings.

General Recommendations

- Any element which is visibly altered or damaged (corrosion, breakage, cracks) must be immediately disposed.
- Products made from plastic through injection moulding may exhibit a slight change in coloration, but this does not affect their quality or characteristics.
- The plastic inserts might wear after prolonged use, and it will be necessary to replace them regularly (max every 5 years) to maintain sufficient retention force.
- When replacing a plastic insert, all the elements, as well as the maintenance of the sealed parts, must be checked.
- Handle with care to avoid aspiration or ingestion by the patient.



Alloys and Materials

- TITANAX: White - Ti 90 - Al 6 - V 4 / Melting range: 1663-1682 °C
- STAINLESS STEEL: White - Fe 63 - Cr 18 - Ni 13.5 - Mo 2.5 - other 3 / Do not heat!
- POLYPROPYLENE: Plastic Inserts

This catalogue and its contents are the copyright of Hader Solutions & Distribution LTD. © 2024. All rights reserved. Any redistribution or reproduction of part or all of the contents in any form is prohibited other than the following. You may print or download contents to a local hard disk extracts for your personal and non commercial use only. You may copy some extracts only to individual third parties for their personal use, but only if you acknowledge the catalogue as the source of the material. You may not, except with our express written permission, distribute or commercially exploit the content. You may not transmit it or store it in any other catalogue, website or other form of electronic retrieval system.

Hader Solutions & Distribution LTD.
 Unit 9, 70 Applewood Main St.
 Applewood, Swords
 CO. Dublin, K67 V4H1
 Ireland