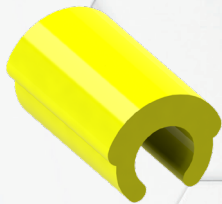
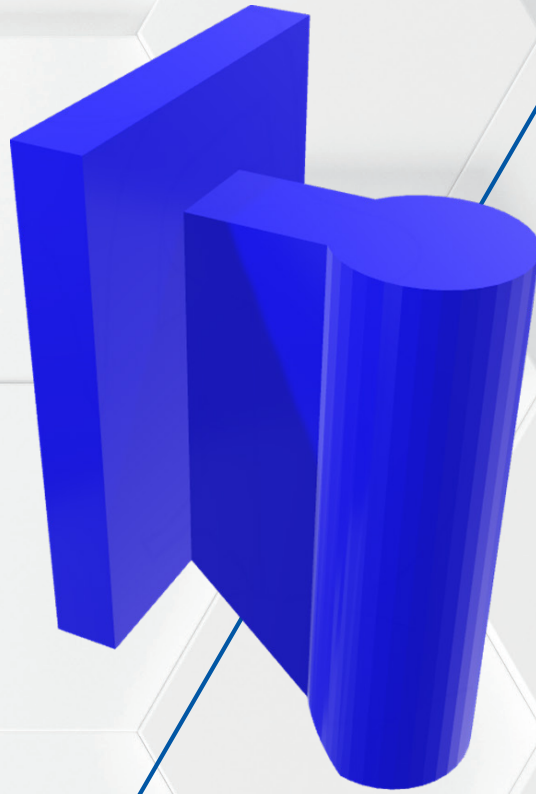




HADER
SOLUTIONS



Hader VX

Extracoronar

USER GUIDE



www.hader.eu

Hader VX. The most popular bar system in the world.

FOR BARS AND EXTRACORONAL CONSTRUCTIONS

The Hader VX is a top choice for bar-supported overdentures and is the most popular dental attachment of its kind. With more than 40 years of use around the world, it's clear that dentists and dental technicians trust and appreciate this attachment. Its versatility shines through, as it can also be used as an extracoronary attachment, offering both reliable security and attractive results.



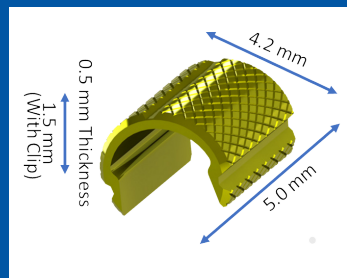
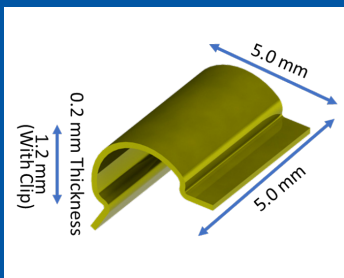
THREE RETENTION LEVELS

Streamline maintenance with our user-friendly plastic inserts, designed for effortless replacement using our specialized yellow insertion tool for dentures over bars and the red insertion tool for extracoronary attachments. Choose from three retention levels—yellow for standard, white for reduced, and red for increased retention—allowing Hader VX to be tailored precisely to meet the unique demands of any case.



TWO HOUSINGS

We offer two different housings designed to provide secure support and simplify the replacement of the male component. The original housing is ultra-thin, measuring just 0.2mm thick, making it an excellent choice for cases where space is limited. For even more precision, the alignment housing, which is slightly smaller at 4.2mm wide, features a parallel groove on the top. This groove is specifically designed to ensure accurate parallel alignment before processing, helping to achieve a precise fit and optimal results every time.

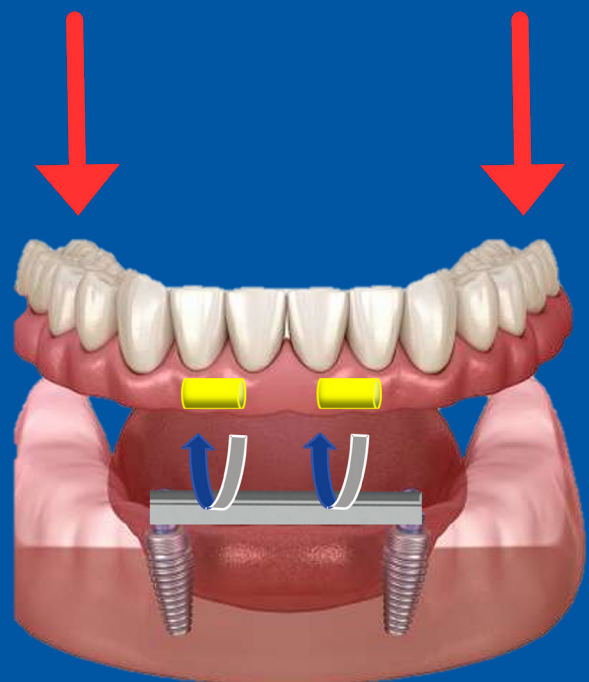


20° ROTATION

The Hader VX allows for natural rotational movement of up to 20° at the bar level, which is crucial for compensating for the compression of soft tissue during chewing. This design feature helps to distribute forces evenly, reducing harmful stress on the supporting pillars. By accommodating the natural movement and compression of the gums, the Hader VX not only enhances patient comfort but also extends the longevity of the dental restoration by minimizing the risk of damage caused by excessive loading.

AESTHETIC SOLUTION

The Hader VX offers the potential for beautiful aesthetic results when used as an extracoronary attachment, thanks to its compact size. This allows the male component to be placed very close to the abutment teeth, with the first denture teeth easily covering the attachments. This precise placement enhances the overall appearance, providing a seamless and natural look for the patient.



Hader VX Extracoronaral

Also available for



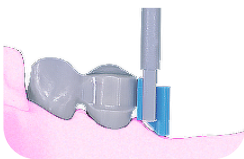
The Hader VX excels in retention as an extracoronaral attachment and offers excellent aesthetic results due to its compact size. Its small design allows the male component to be placed close to the abutment teeth, creating a natural and seamless appearance while ensuring a secure hold.

1. Manufacture Male

The male component offers a 45° inclination and is periodontally friendly. It can be cut down to as small as 3mm if required. These instructions cover the use of the male with mandrel (ref- 5021008). To assist with incorporation and handling, use the vertical guide (ref- 5021016), which is included with the male. If needed, the male paralleling mandrel (ref-5021006) can also be used, as it fits the sliding part of the male.

For those using the male with extension (ref- 5021009), use the built-in handle for easier incorporation. Afterward, remove the extension with a heated instrument.

1. Determine the path of insertion of the prosthesis. Wax-up the crowns incorporating a lingual shoulder.
2. Incorporate the Hader VX Vertical Bar (ref- 5021008) with the Vertical Guide (ref- 5021016). It must be parallel to the insertion path and on the crest of the ridge.



3. Invest and cast as usual. Polish but do not sandblast or rubber wheel
4. Finish the crowns



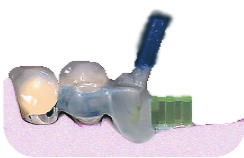
5. Seat the crowns on the model and assemble one white plastic insert (ref- 5021011) and the Vertical Cast Element (ref- 5021013).



6. Reduce the housing by gingival only (never occlusal) to adapt to the gingival anatomy. The plastic insert can be reduced in height to a minimum of 3mm.



7. Incorporate the lingual arm into the wax pattern. Adapt the shape of the housing to fit the veneering. If necessary, add retention beads. It is possible to add an occlusal wax surface for cases of close bite.



2. Process Denture

8. Sprue the structure on the occlusal surface, remove from the model and extract the white female insert from the housing with a pointed instrument. Do not dispose the plastic insert as it will be used afterwards.



9. Invest and cast in the same alloy as the crowns. Sandblast with coarse aluminium oxide. Do not polish the inside of the housing.



10. Proceed to veneer the cast structure matching the abutment crowns.



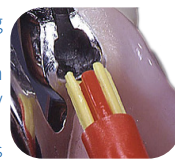
11. Place the white plastic insert inside the housing and assemble with the male.

12. Cover the extension of the housing with a thin layer of wax. Prepare for duplication by blocking out the undercuts.



13. Wax up the pattern of the frame covering the extension. Cast and finish. Send for try-in.

14. Place the frame and the housing on the master model. They can be attached together with cold-cure resin, or they can be soldered.



15. Insert the definitive plastic female into the housing with the red insertion tool (ref- 5021015).

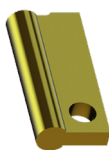
16. Finish the prosthesis. Try-in and ensure there is an optimal retention. If necessary, adapt the retention by replacing the female insert.

17. Tip: for easier insertion of the prosthesis, it is possible to round the occlusal tip of the male

Use of Analogue

Follow these instructions to manufacture a new prosthesis to fit an existing extracoronaral vertical bar

1. Take a full impression accurately copying the males.
2. Seat the Hader VX Analog Vertical (ref- 5021017) in the space of the male and pour the stone model.
3. Place a white female insert (ref- 5021011) and Vertical Cast Element (ref- 5021013) over the analog.



4. Continue with steps 6 to 17 previously described.

Replacing Females

The female components can be easily replaced chairside or in the laboratory

1. Remove the plastic insert with a small sharp instrument.
2. Insert the new plastic inserts with the red insertion tool (ref- 5021015).

Choose the desired retention level
Yellow (ref-5021010), standard retention.
White (ref-5021011), reduced retention.
Red (ref-5021012), increased retention.



Relining

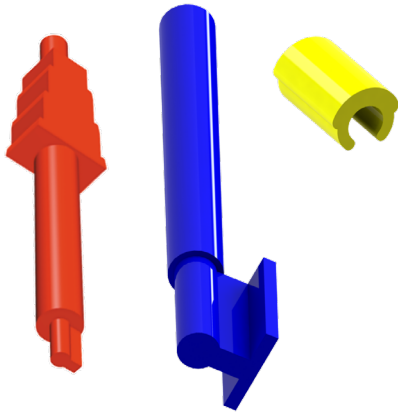
1. Take a regular reline impression keeping the plastic inserts in the prosthesis
2. Remove the plastic inserts
3. Fabricate the stone model and remove all impression material. It is recommended to use a reline jig or flask.
4. Reline as usual. Finish and insert new plastic females with the desired retention.

ALSO AVAILABLE FOR

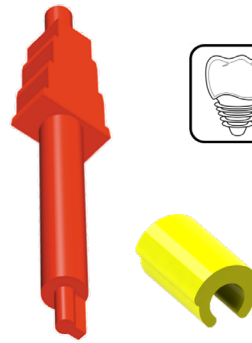


It's time to unlock the full potential of digital dentistry with the Hader Digital Library. Visit our website www.hader.eu, or **scan the QR code** to download the Digital Library today, and take your dental practice to new heights.

Available Kits

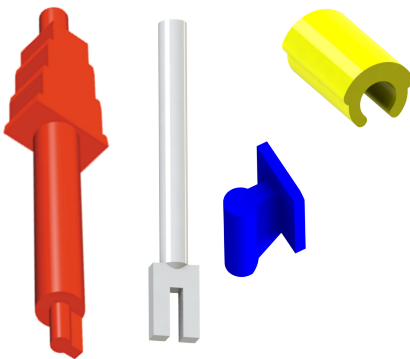


5022005
**Hader VX
Extracoron Kit A**
Six sets with males with
extension.

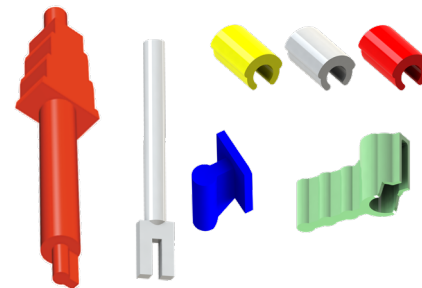


**CAD
CAM**

5022007
**Hader VX
Extracoron Kit A
CAD-CAM**



5022008
**Hader VX
Extracoron Kit B**
Six sets with males with
mandrel.



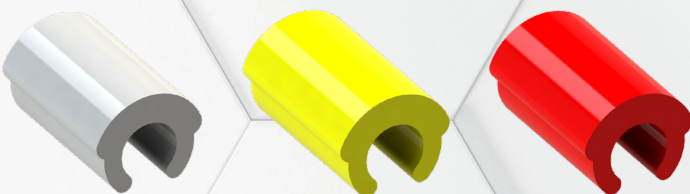
5022009
**Hader VX
Extracoron Kit C**
Two sets of males with
mandrel, cast element
and six plastic inserts.

General Recommendations

- Any element which is visibly altered or damaged (corrosion, breakage, cracks) must be immediately disposed.
- Products made from plastic through injection moulding may exhibit a slight change in coloration, but this does not affect their quality or characteristics.
- The plastic inserts might wear after prolonged use, and it will be necessary to replace them regularly (max every 5 years) to maintain sufficient retention force.
- When replacing a plastic insert, all the elements, as well as the maintenance of the sealed parts, must be checked.
- Handle with care to avoid aspiration or ingestion by the patient.

Alloys and Materials

- TITANAX: White - Ti 90 - Al 6 - V 4 / Melting range: 1663-1682 °C
- STAINLESS STEEL: White - Fe 63 - Cr 18 - Ni 13.5 - Mo 2.5 - other 3 / Do not heat!
- POLYPROPYLENE: Plastic Inserts



This catalogue and its contents are the copyright of Hader Solutions & Distribution LTD. © 2024. All rights reserved. Any redistribution or reproduction of part or all of the contents in any form is prohibited other than the following. You may print or download contents to a local hard disk extracts for your personal and non commercial use only. You may copy some extracts only to individual third parties for their personal use, but only if you acknowledge the catalogue as the source of the material. You may not, except with our express written permission, distribute or commercially exploit the content. You may not transmit it or store it in any other catalogue, website or other form of electronic retrieval system.

Hader Solutions & Distribution LTD.

Unit 9, 70 Applewood Main St.
Applewood, Swords
CO. Dublin, K67 V4H1
Ireland



HADER
SOLUTIONS